



2009 Certification

- Measures developed in consultation with institutions and approved by Council in 2005
- Targets set in late summer 2006
- Approved by Council November 2006
- Performance based on 2007-08 academic year



Institutional Performance Standards

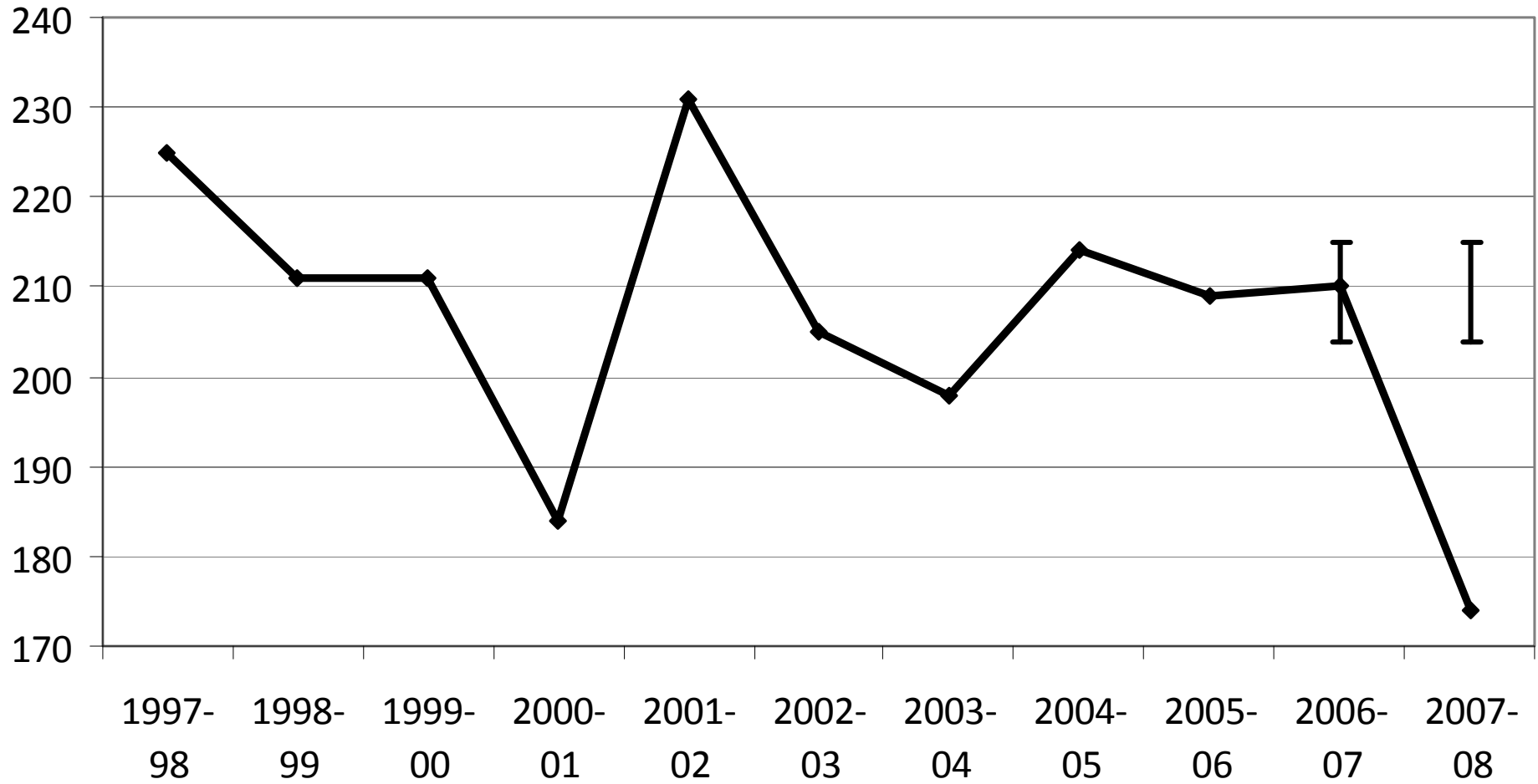
- **Flexible**
 - **Target:** “In general, institutions are expected to achieve their agreed upon targets and standards on all performance measures in order to be certified by SCHEV.”
 - **Threshold:** “However, the State Council, in working with each institution, shall establish a prescribed range of permitted variance from annual targets for each education-related measure, as appropriate.”



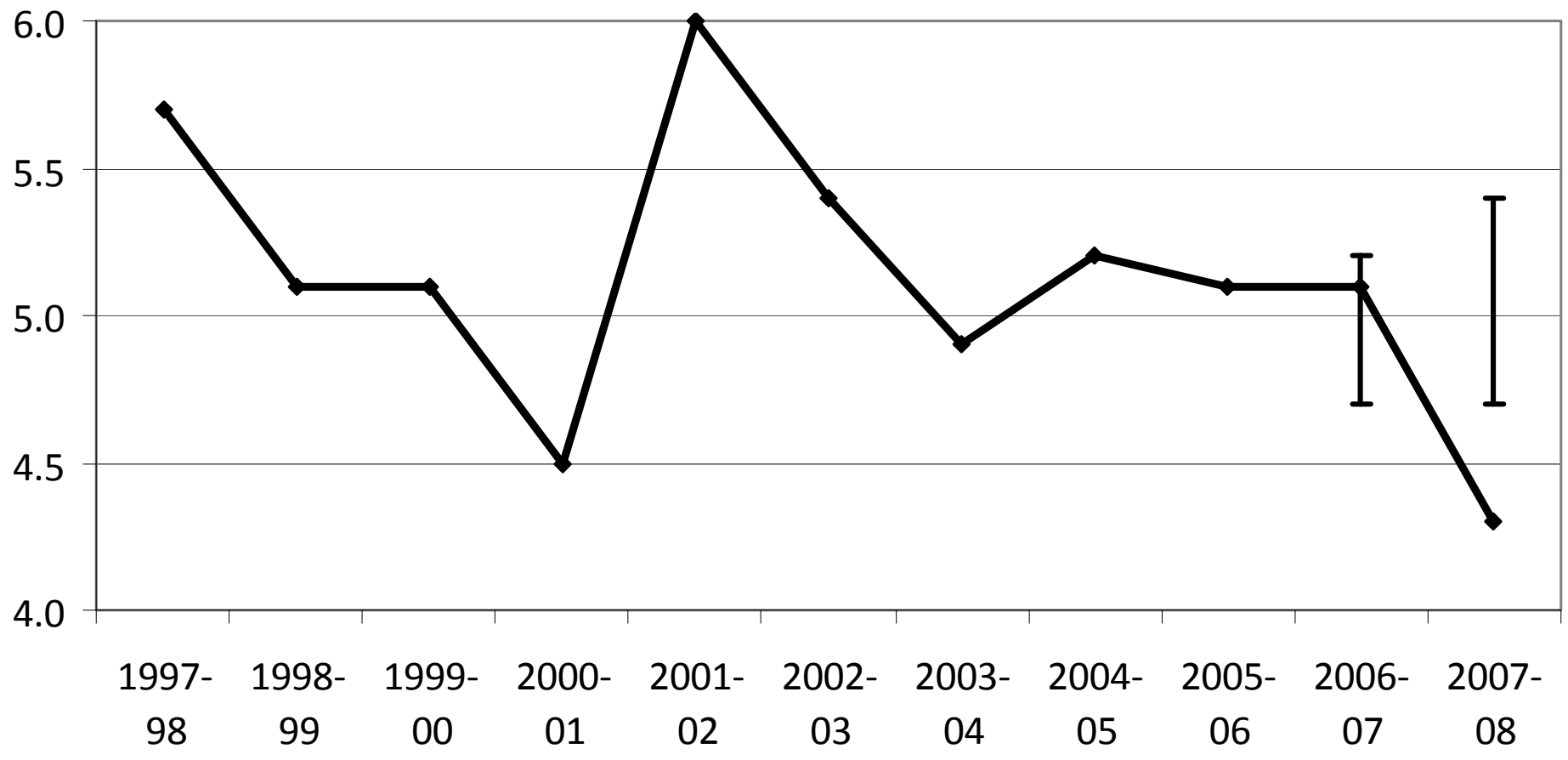
Institutional Performance Standards

- Individualized targets/thresholds
 - Develop by each institution
 - Institution specific
 - No set standard of performance
 - Not compared to other institutions
 - Unique to institution mission, students, etc.
 - Should be ‘reasonable and achievable’
 - Council approved

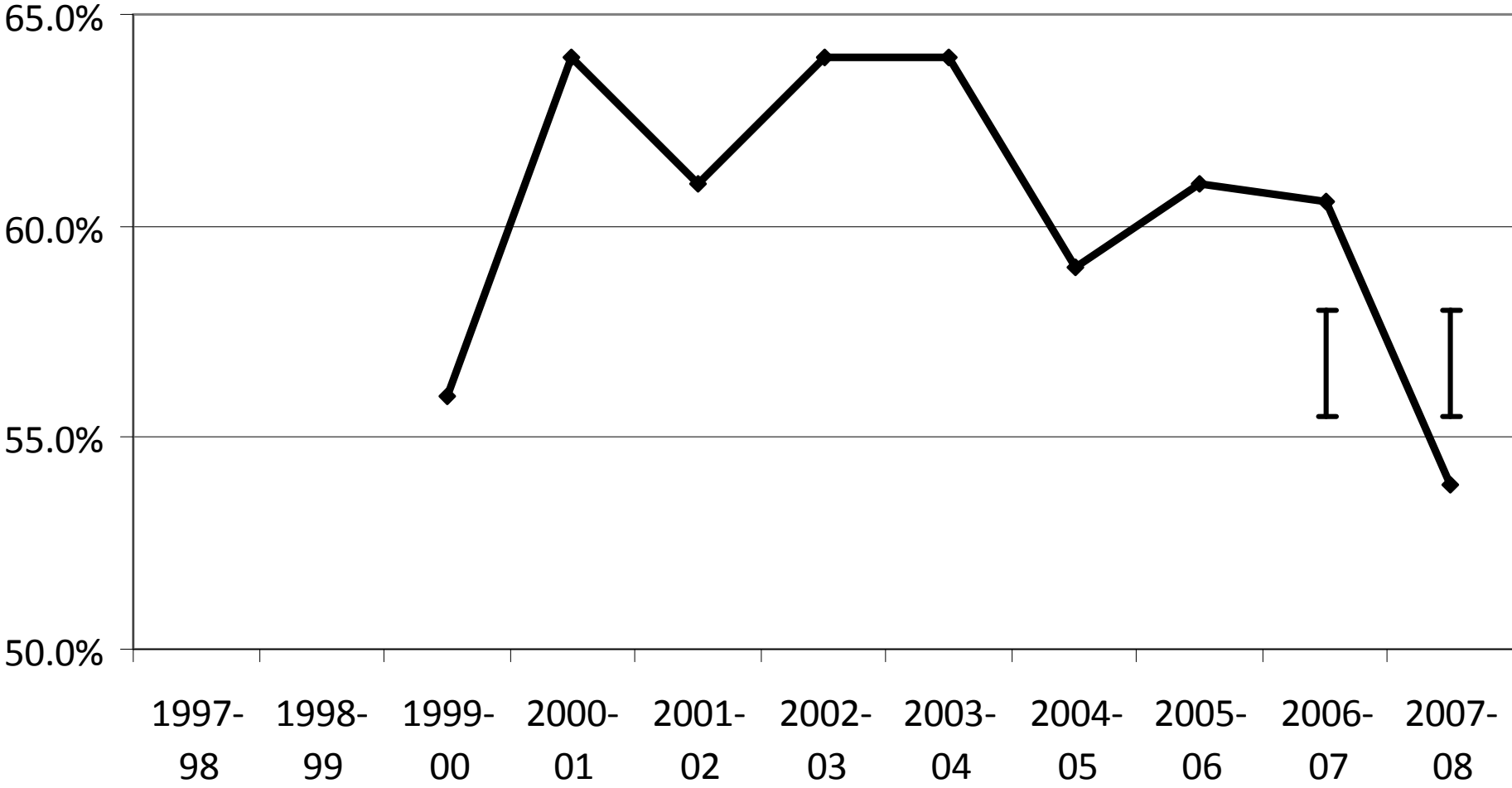
RBC: Measure 3 - Degree Awards



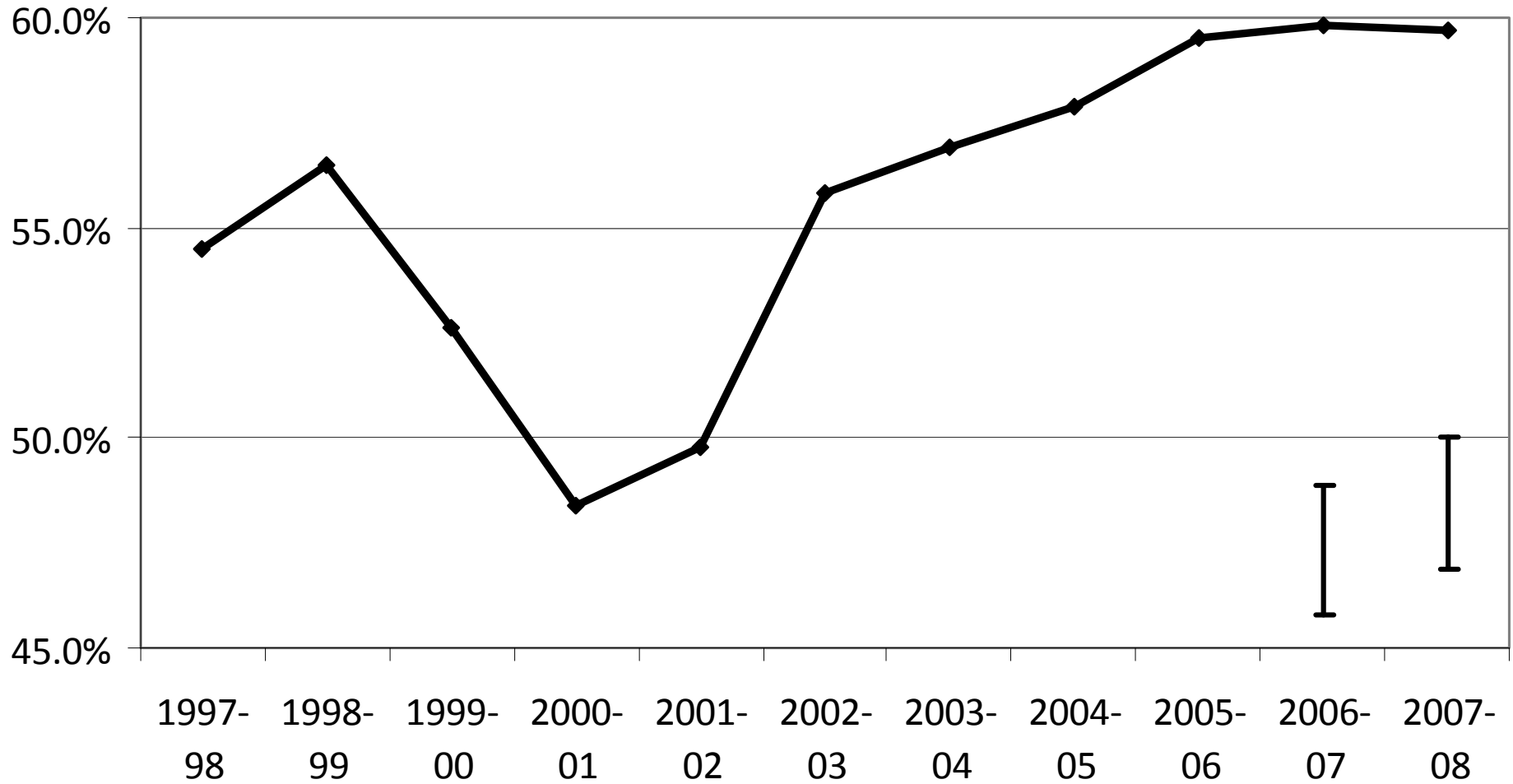
RBC: Measure 10 - Degrees per FTE Faculty



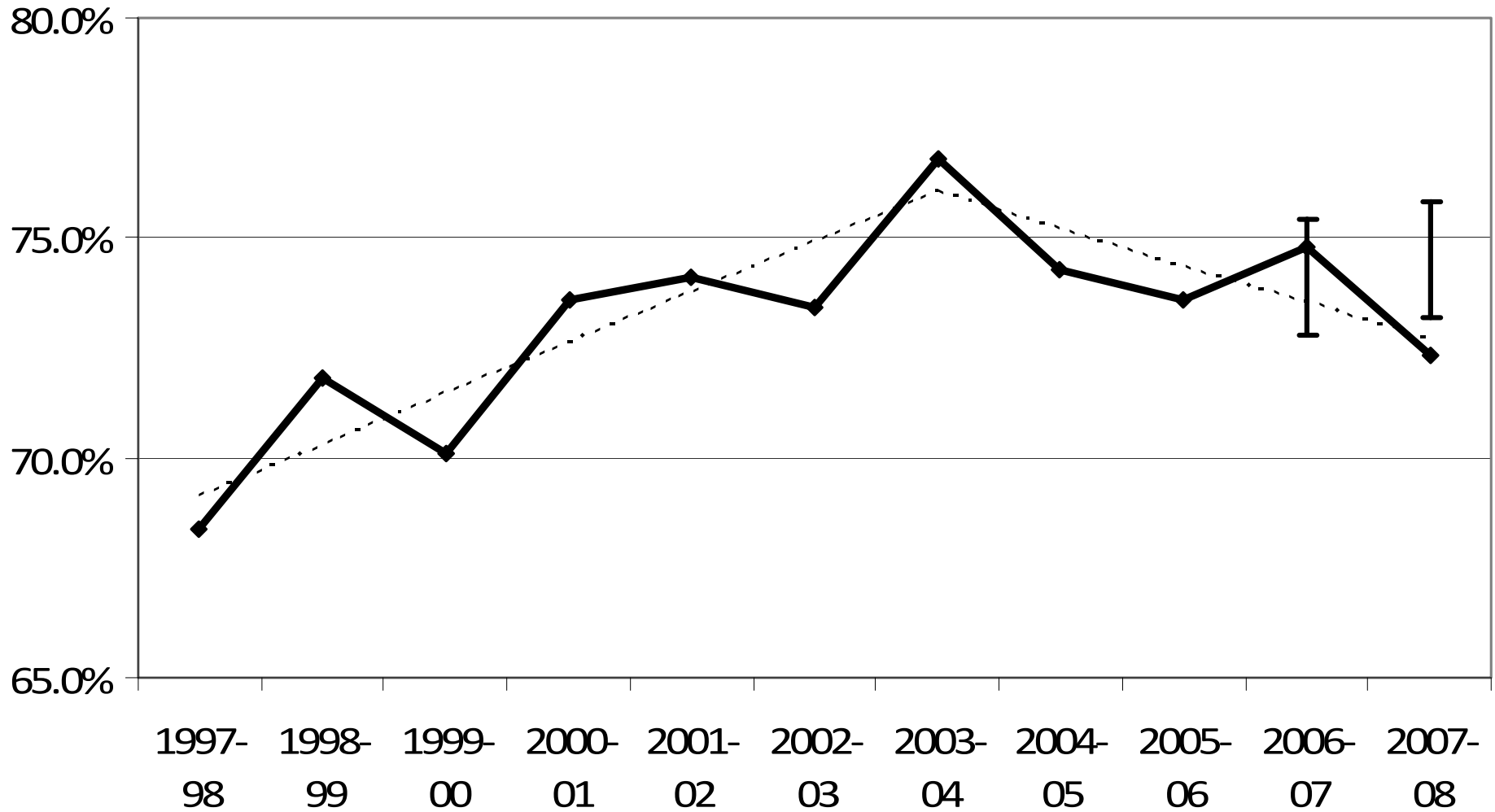
RBC: Measure 11 - Retention Rate



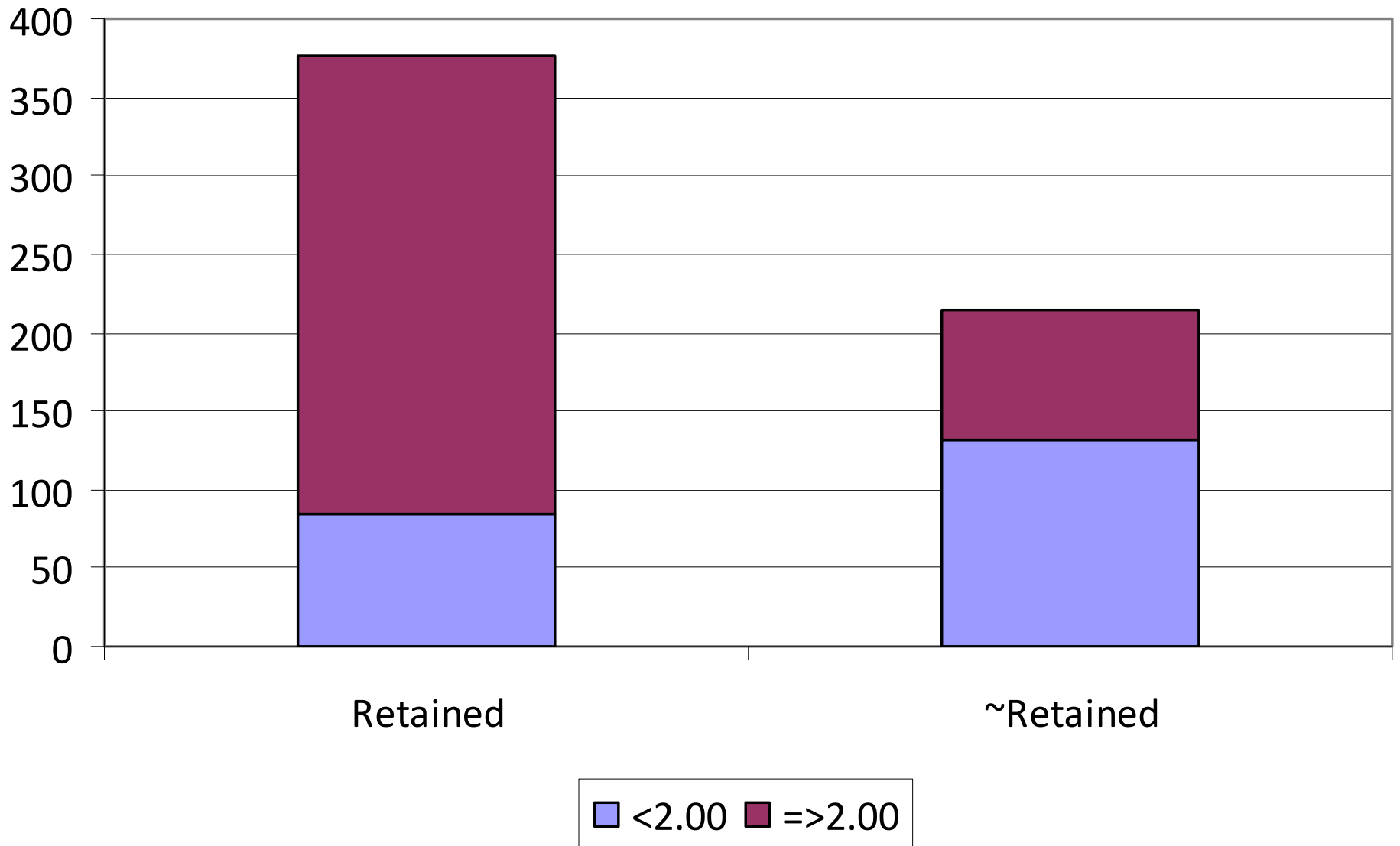
UVAW: Measure 5.2 - Need-based Borrowing %



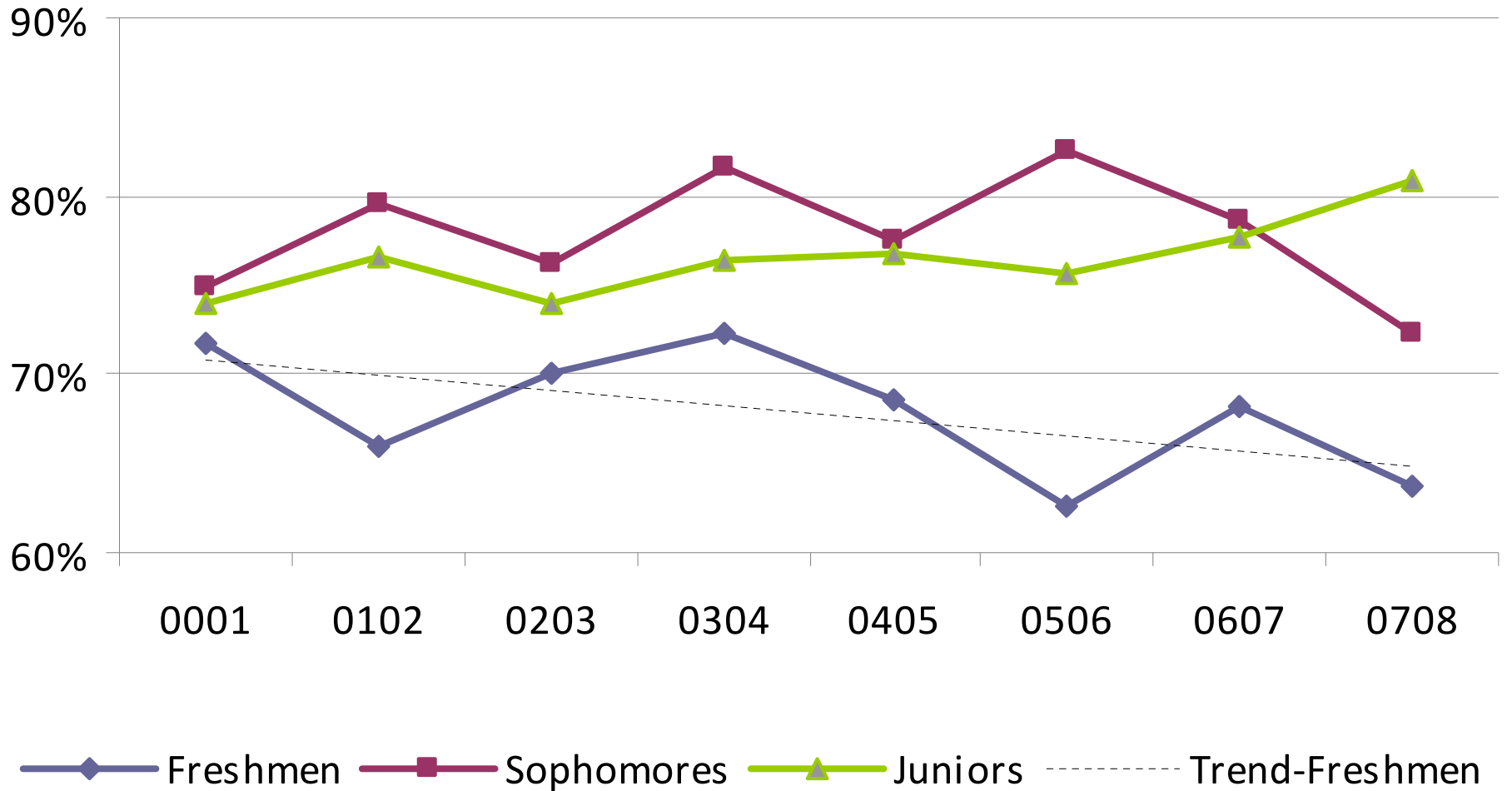
UAW: Measure 11 - Retention Rate



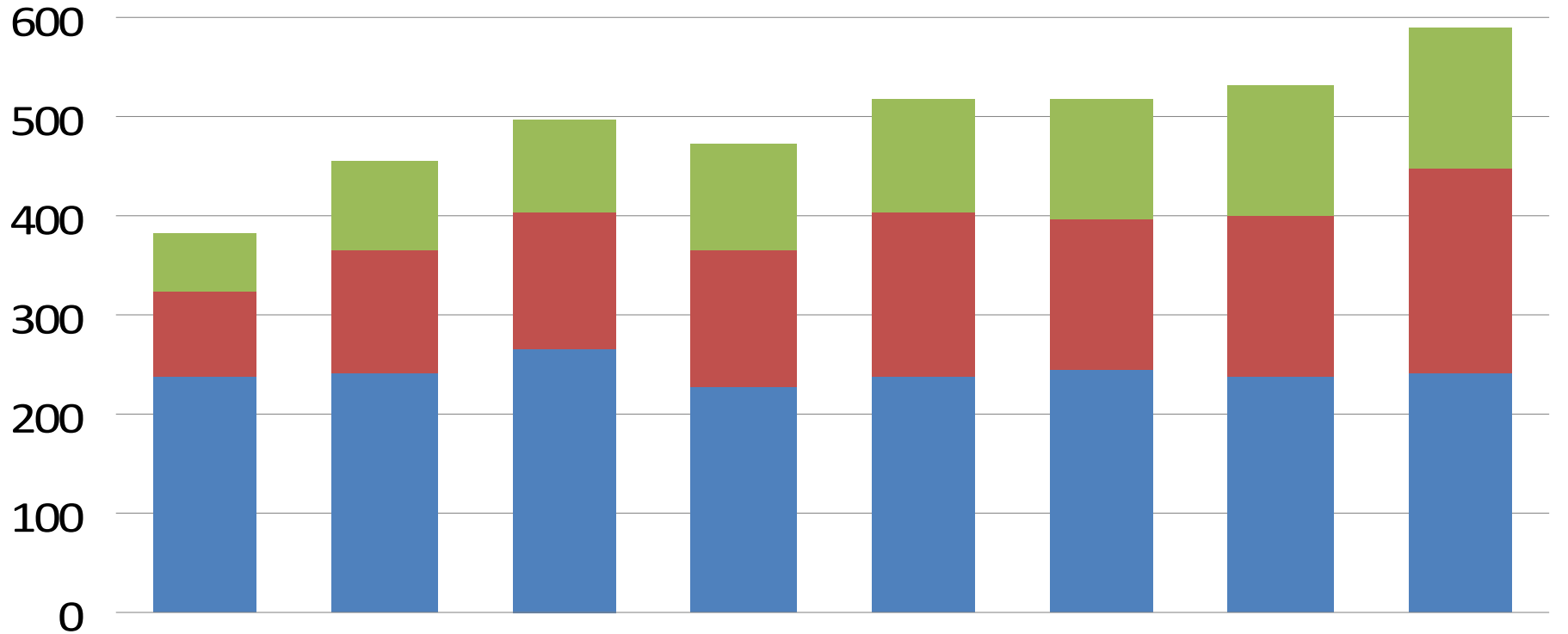
UVAW 2007-08 Freshman Retention



Retention Rates by Class

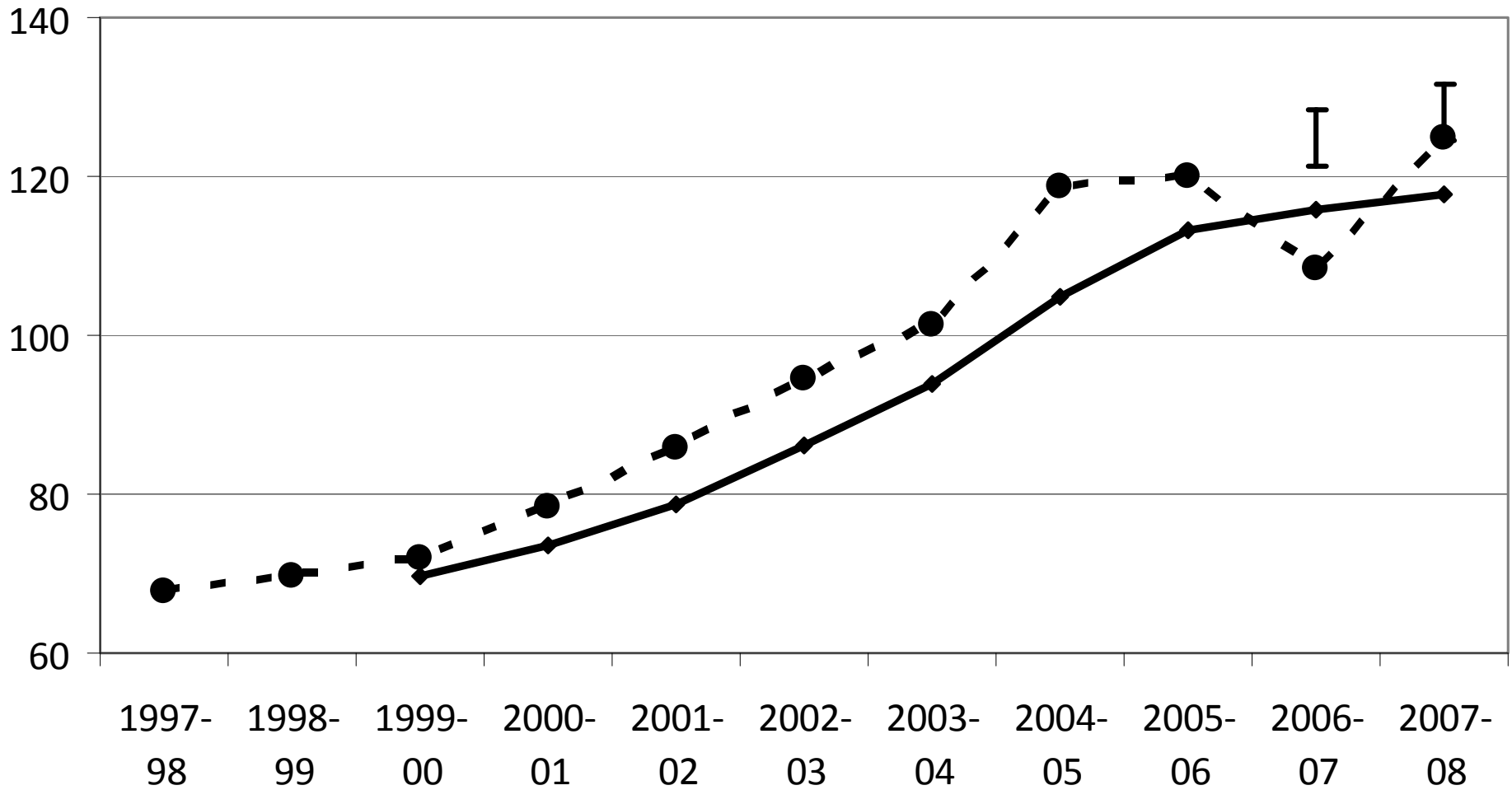


Number of Freshmen by Region

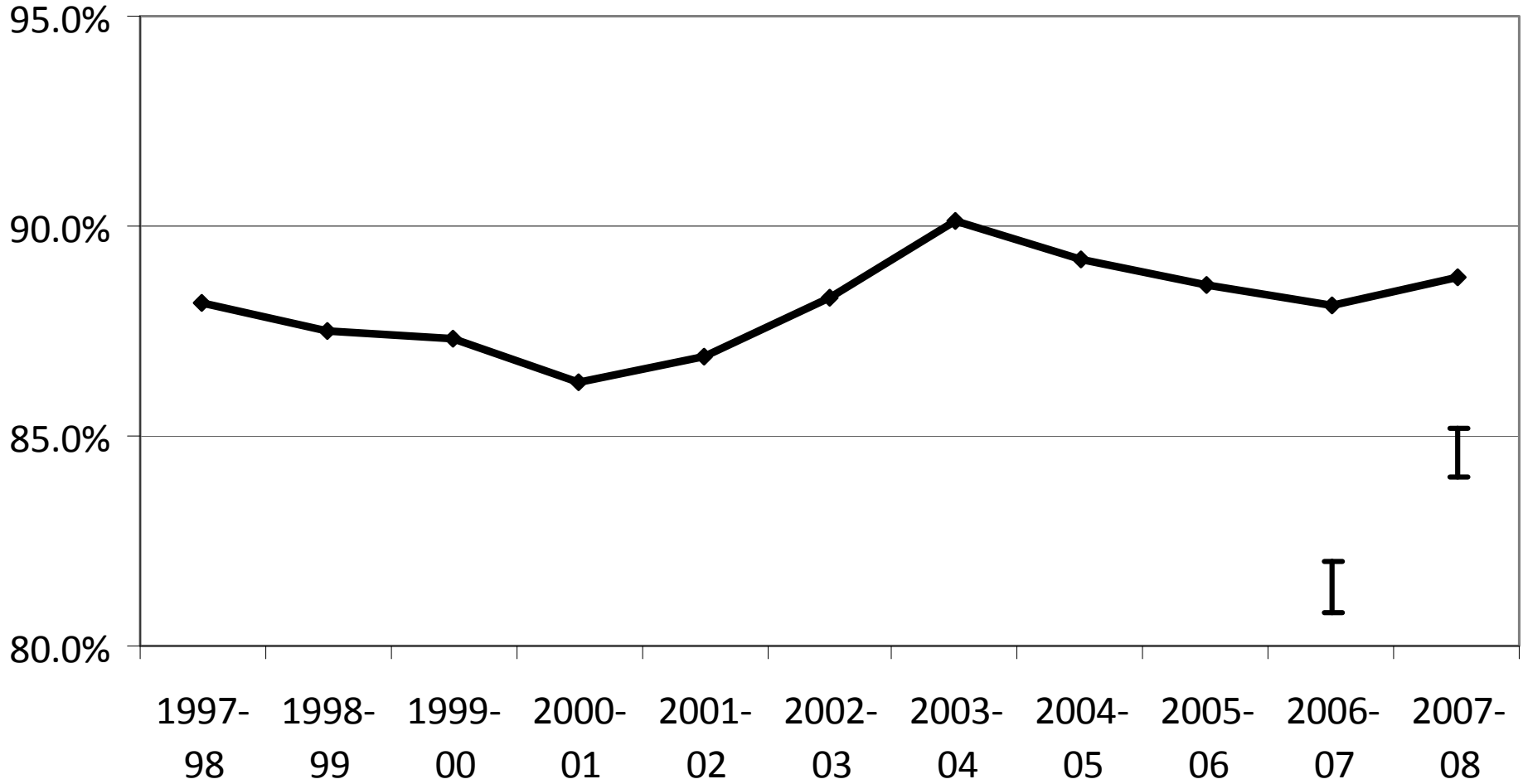


Coalfields Metro-OS RofS

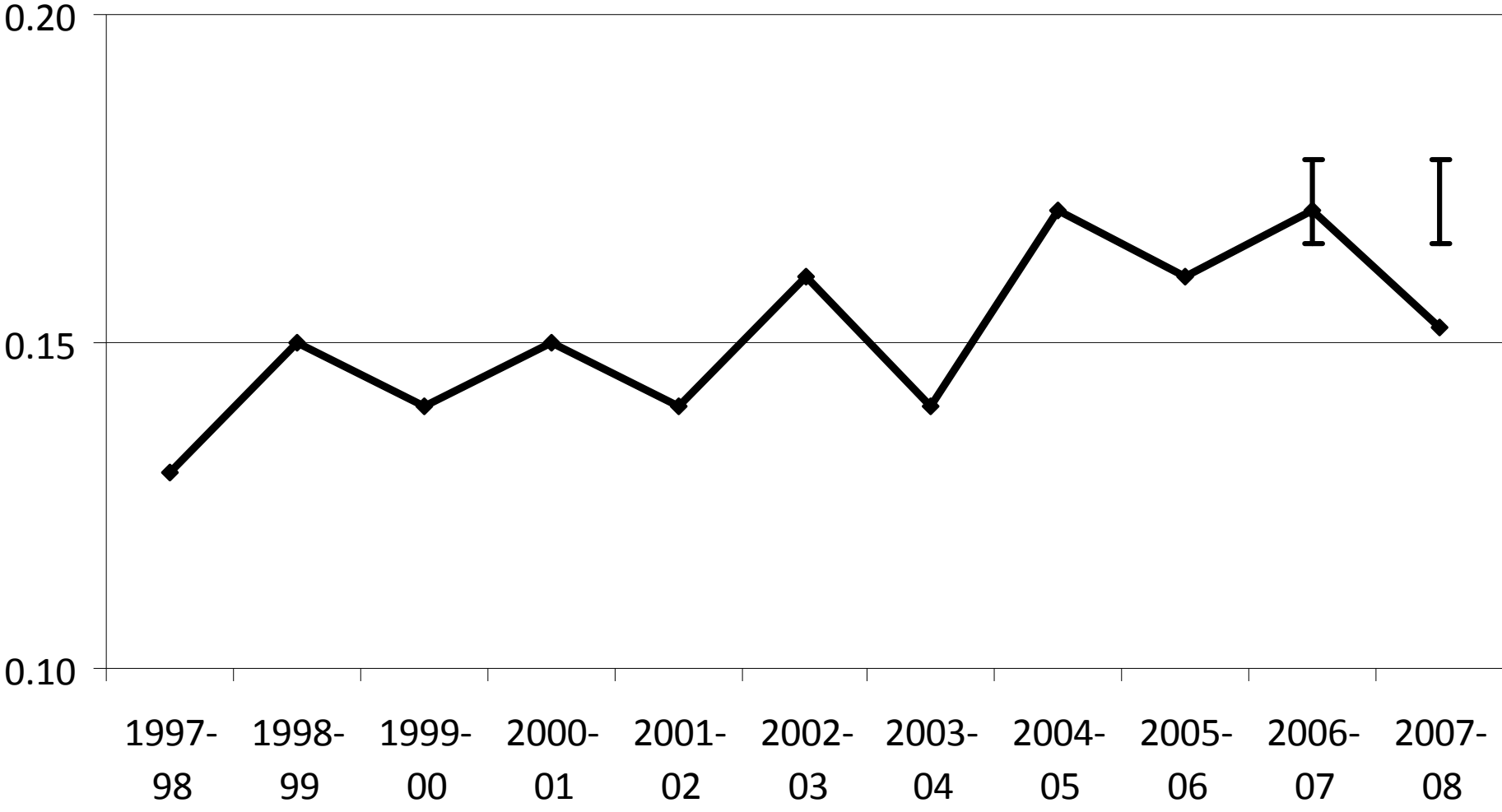
VCU: Measure 17 - Research Expenditures



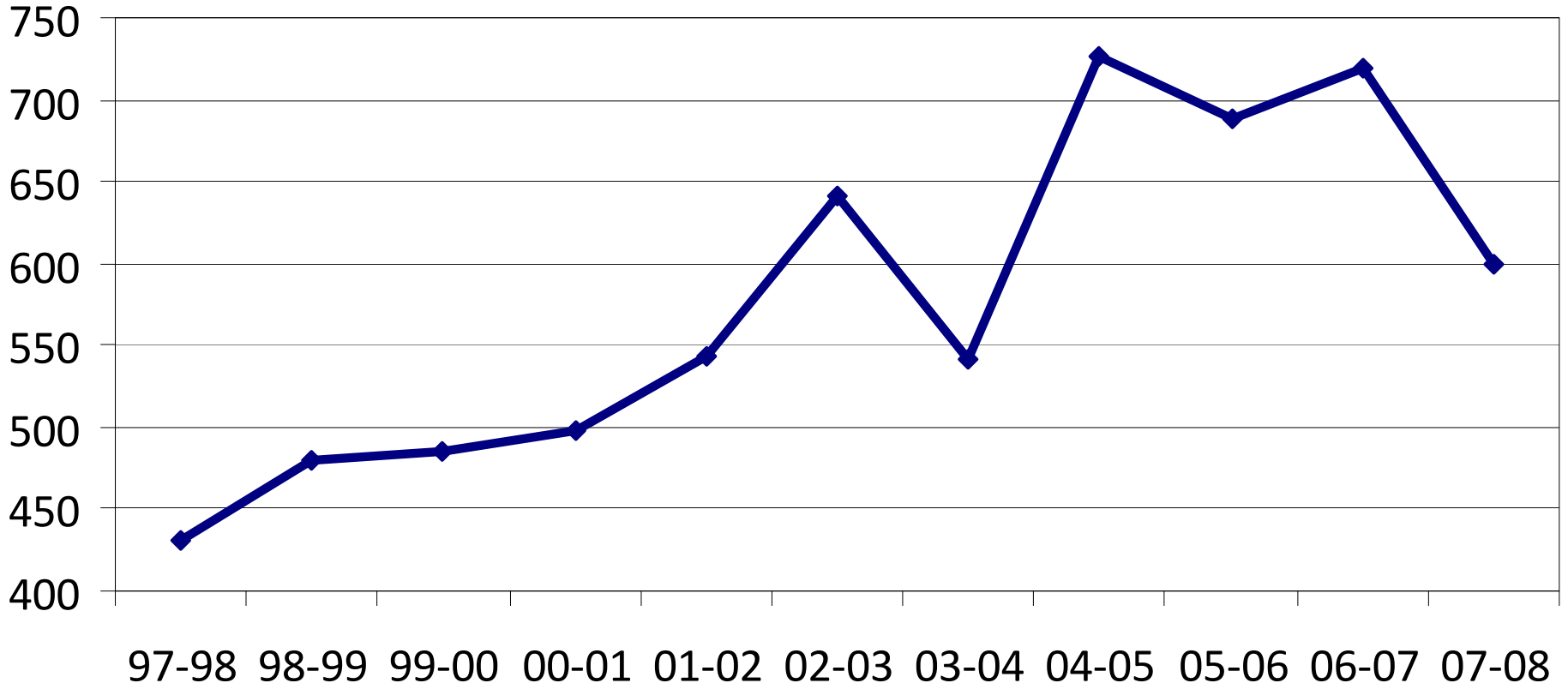
VSU: Measure 5.2 - Need-based Borrowing %



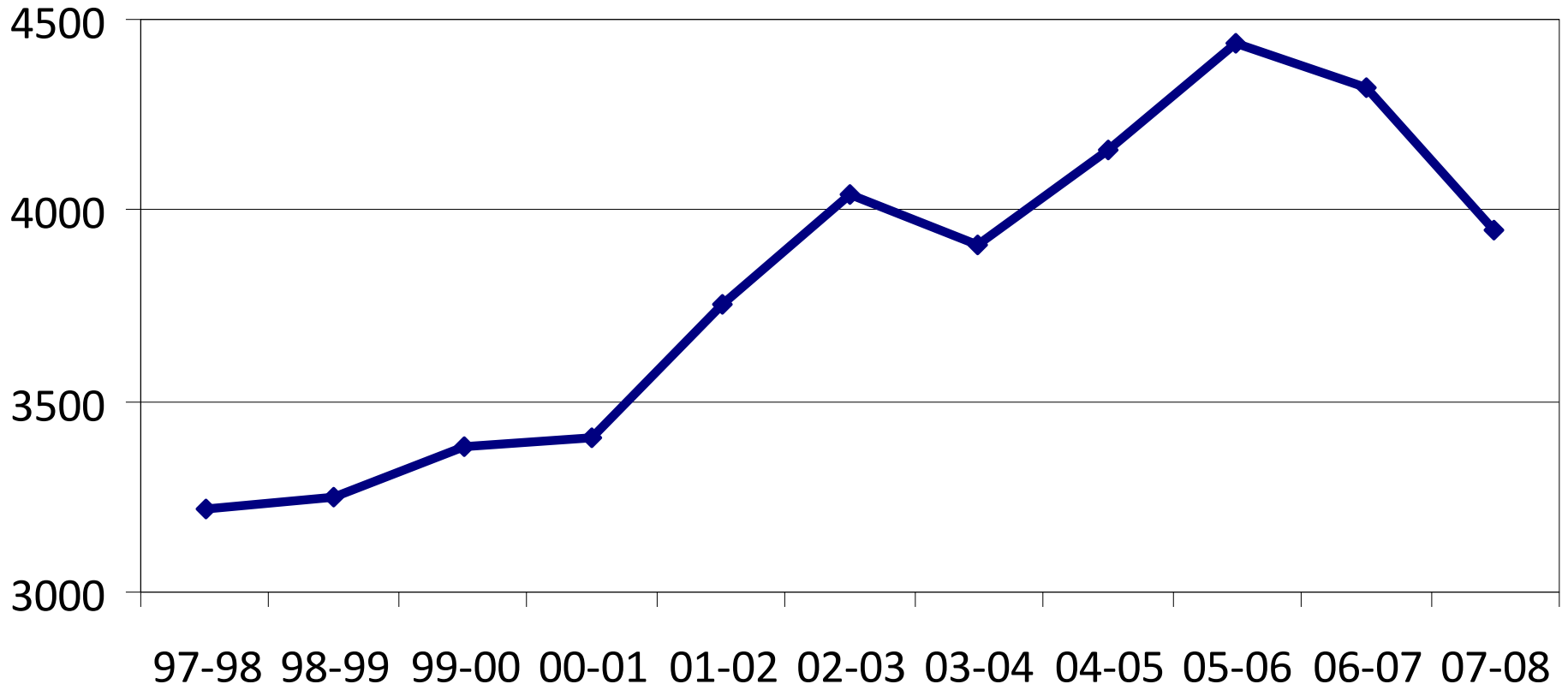
VSU: Measure 12 - Degrees per FTE Students



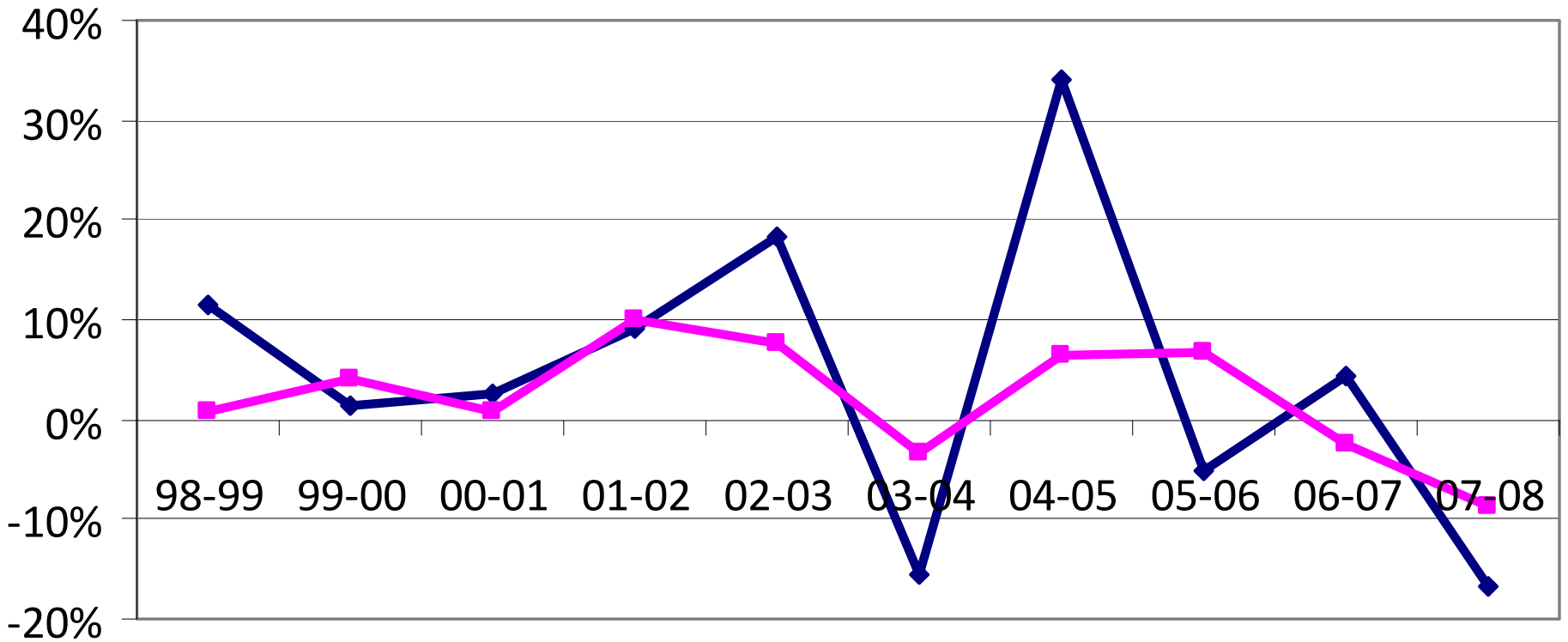
Undergraduate Degrees (numerator)



Degree-Seeking Undergraduate Full-Time Equivalent Students (denominator)



Annual Percentage Change



◆ Degrees (numerator) ■ FTES (denominator)